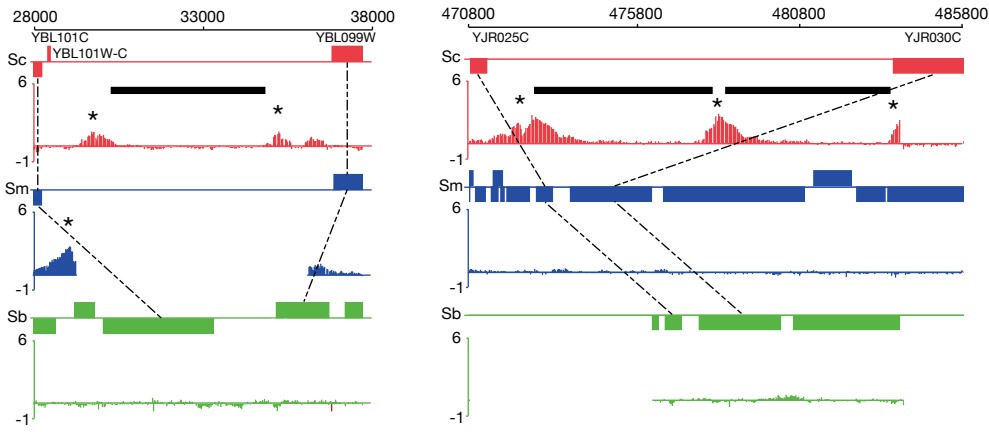


Supplemental Figure 4. Borneman et al.,

A



B

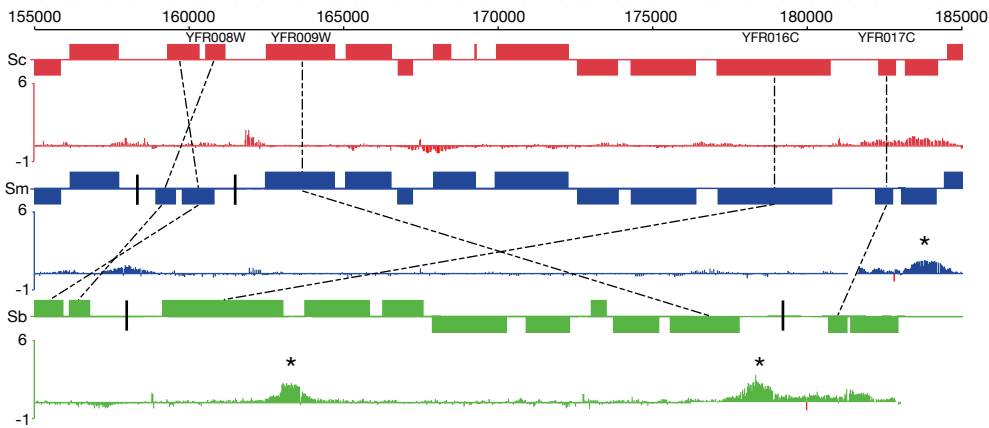


Fig. S4. Differences in binding caused by (A) Ty elements (black bars) and (B) genomic rearrangements (inversion pictured here, with the break points indicated by the vertical black lines). In each case, the binding signal (log2 tagged versus untagged) of Ste12 in *S. cerevisiae* (red), *S. mikatae* (blue) and *S. bayanus* (green). In each case, the positions of homologous ORFs between species are indicated by the dashed lines.